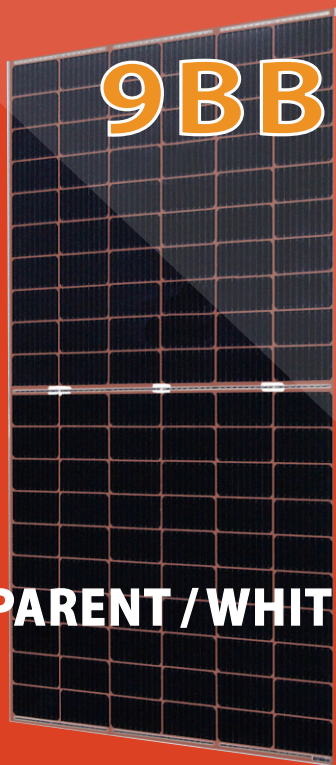


LUXEN

LUXCLEAR[®] MONO 315-335w

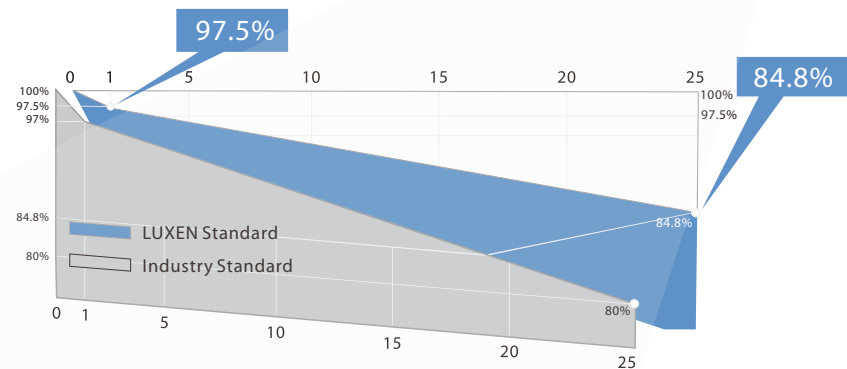
Double Glass Modules of LUXCLEAR[®] series with powerful performance and high transmittance are ideal for both installations with most strict demands of durability and projects of building.

120 cells Bifacial
Double Glass Modules



TRANSPARENT / WHITE

LINEAR PERFORMANCE WARRANTY



ISO9001:2015
management systems



IEC61215 & IEC61730
standard quality



Smaller electric current, less CTM loss
Lower risk of hot spot



Wind load up to 3800Pa
Snow load up to 5400Pa



0-5W positive power sorting



Stable performance under
weak light conditions



25-year power warranty
12-year product warranty



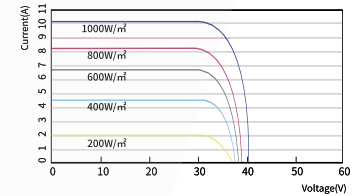
MONO 315-335w 120 cells Bifacial DG 9BB

LUXEN

ELECTRICAL PARAMETERS

	LNSK-315M		LNSK-320M		LNSK-325M		LNSK-330M		LNSK-335M	
	STC	NOCT	STC	NOCT	STC	NOCT	STC	NOCT	STC	NOCT
Maximum Power (Pmax)	315W	234W	320W	238W	325W	242W	330W	246W	335W	250W
Open Circuit Voltage (Voc)	40.15V	37.30V	40.45V	37.67V	40.78V	38.00V	41.07V	38.38V	41.37V	38.72V
Short Circuit Current (Isc)	10.09A	8.10A	10.17A	8.15A	10.24A	8.21A	10.32A	8.26A	10.39A	8.32A
Voltage at Maximum Power (Vmp)	33.27V	33.11V	33.54V	33.43V	33.78V	33.70V	34.06V	34.02V	34.30V	34.31V
Current at Maximum Power (Imp)	9.47A	7.07A	9.54A	7.12A	9.62A	7.18A	9.69A	7.23A	9.77A	7.29A
Module Efficiency(%)	18.34%		18.63%		18.92%		19.21%		19.51%	

LNSK-325M/I-V



STC: Irradiance 1000W/m², cell temperature 25°C, AM1.5G

NOCT: Irradiance 800W/m², ambient temperature 20°C, wind speed 1m/s, AM1.5G

BIFACIAL OUTPUT-REAR SIDE POWER GAIN

5%	Maximum Power (Pmax)	331W	336W	341W	347W	352W
	Module Efficiency STC (%)	19.26%	19.56%	19.87%	20.18%	20.48%
15%	Maximum Power (Pmax)	362W	368W	374W	380W	385W
	Module Efficiency STC (%)	21.09%	21.43%	21.76%	22.10%	22.43%
25%	Maximum Power (Pmax)	394W	400W	406W	413W	419W
	Module Efficiency STC (%)	22.93%	23.29%	23.65%	24.02%	24.38%

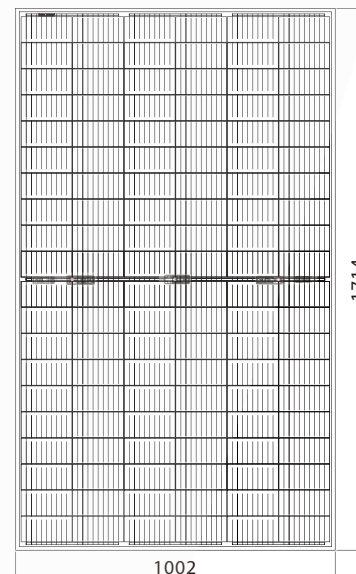
Operating Module Temperature	-40°C to +85°C
Maximum System Voltage	1500V DC(IEC)
Maximum Series Fuse Rating	20A
Power Tolerance	0/+5W
Temperature Characteristics	
Nominal Operating Cell Temperature(Noct)	45±2°C
Temperature Coefficient of Pmax	-0.36%/°C
Temperature Coefficient of Voc	-0.28%/°C
Temperature Coefficient of Isc	+0.05%/°C

Packing Configuration

	20' GP	40' HQ
Container		
Pieces per pallet	30	30
Pallets per container	5	24
Pieces per container	150	720

Mechanical Characteristics

Solar Cell	MONO158.75x79.375mm
No.of Cell	120(6x20)
Dimensions	1714x1002x6mm
Weight	24.0kgs
Front	2.0mm semi-tempered glass
Back	2.0mm semi-tempered glass
Junction Box	Ip68 rated(3 by pass diodes)
Output Cables	4.0mm ²
	symmetrical length
	300mm
Connectors	MC4 compatible
Mechanical load test	Front 5400Pa/Back 2400Pa



LUXEN SOLAR ENERGY CO., LTD
 T:+86 512 6708 1572
 F:+86 512 6708 1570
 sales@luxensolar.com
 www.luxensolar.com



Note: Due to continuous technical innovation, R&D and improvement, technical data above mentioned may be of modification accordingly. LUXEN SOLAR have the sole right to make such modification at anytime without further notice.