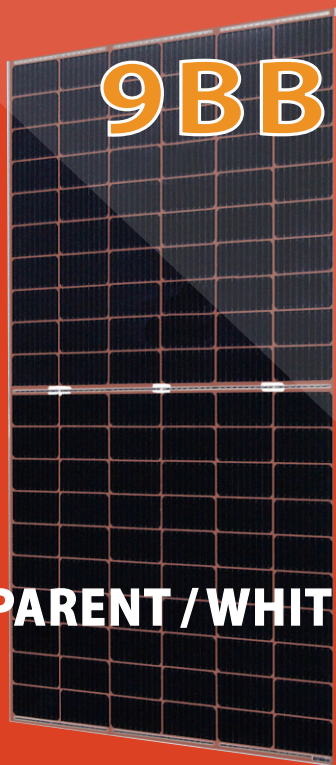


LUXEN

# LUXCLEAR<sup>®</sup> MONO 350-370w

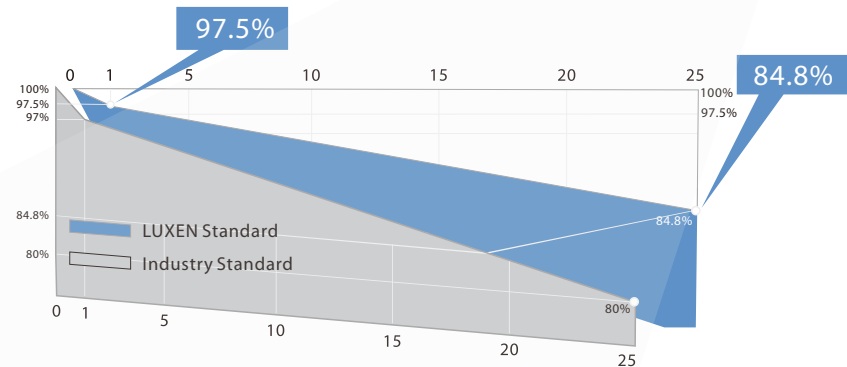
Double Glass Modules of LUXCLEAR<sup>®</sup> series with powerful performance and high transmittance are ideal for both installations with most strict demands of durability and projects of building.

120 cells Bifacial  
Double Glass Modules



TRANSPARENT / WHITE

## LINEAR PERFORMANCE WARRANTY



ISO9001:2015  
management systems



IEC61215 & IEC61730  
standard quality



Smaller electric current, less CTM loss  
Lower risk of hot spot



Wind load up to 3800Pa  
Snow load up to 5400Pa



0-5W positive power sorting



Stable performance under  
weak light conditions



25-year power warranty  
12-year product warranty



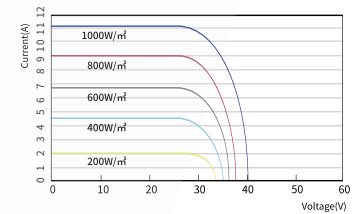
# MONO 350-370w 120 cells Bifacial DG 9BB

# LUXEN

## ELECTRICAL PARAMETERS

	LNSK-350M		LNSK-355M		LNSK-360M		LNSK-365M		LNSK-370M	
	STC	NOCT	STC	NOCT	STC	NOCT	STC	NOCT	STC	NOCT
Maximum Power (Pmax)	350W	259W	355W	262W	360W	265W	365W	268W	370W	271W
Open Circuit Voltage (Voc)	40.38V	37.23V	40.59V	37.34V	40.79V	37.45V	40.99V	37.55V	41.18V	37.66V
Short Circuit Current (Isc)	11.02A	8.89A	11.10A	8.95A	11.18A	9.01A	11.26A	9.07A	11.34A	9.13A
Voltage at Maximum Power (Vmp)	33.27V	30.69V	33.49V	30.82V	33.71V	30.96V	33.92V	31.09V	34.13V	31.22V
Current at Maximum Power (Imp)	10.52A	8.44A	10.60A	8.50A	10.68A	8.56A	10.76A	8.62A	10.84A	8.68A
Module Efficiency(%)	18.74%		19.00%		19.27%		19.54%		19.81%	

LNSK-360M/I-V



**STC:** Irradiance 1000W/m<sup>2</sup>, cell temperature 25°C, AM1.5G  
**NOCT:** Irradiance 800W/m<sup>2</sup>, ambient temperature 20°C, wind speed 1m/s, AM1.5G

## BIFACIAL OUTPUT-REAR SIDE POWER GAIN

<b>5%</b>	Maximum Power (Pmax)	368W	373W	378W	383W	389W
	Module Efficiency STC (%)	19.67%	19.95%	20.23%	20.51%	20.80%
<b>15%</b>	Maximum Power (Pmax)	403W	408W	414W	420W	426W
	Module Efficiency STC (%)	21.55%	21.85%	22.16%	22.47%	22.78%
<b>25%</b>	Maximum Power (Pmax)	438W	444W	450W	456W	463W
	Module Efficiency STC (%)	23.42%	23.75%	24.09%	24.42%	24.76%

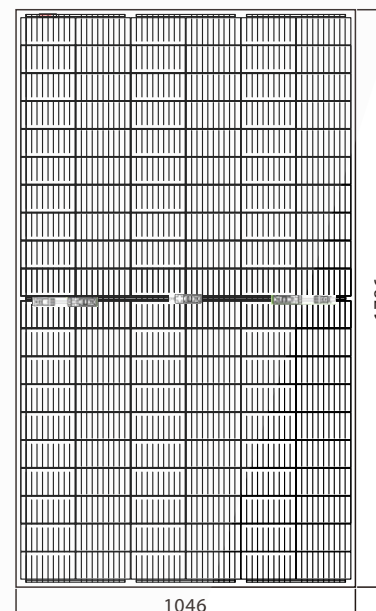
Operating Module Temperature	-40°C to +85°C
Maximum System Voltage	1500V DC(IEC)
Maximum Series Fuse Rating	20A
Power Tolerance	0/+5W
<b>Temperature Characteristics</b>	
Nominal Operating Cell Temperature(Noct)	45±2°C
Temperature Coefficient of Pmax	-0.36%/°C
Temperature Coefficient of Voc	-0.28%/°C
Temperature Coefficient of Isc	+0.05%/°C

## Packing Configuration

	20'GP	40'HQ
Container		
Pieces per pallet	30	30
Pallets per container	6	24
Pieces per container	180	720

## Mechanical Characteristics

Solar Cell	MONO166x83mm
No.of Cell	120(6x20)
Dimensions	1786x1046x6mm
Weight	26.0kgs
Front	2.0mm semi-tempered glass
Back	2.0mm semi-tempered glass
Junction Box	Ip68 rated(3 by pass diodes)
	4.0mm <sup>2</sup>
Output Cables	symmetrical length
	300mm
Connectors	MC4 compatible
Mechanical load test	Front 5400Pa/Back 2400Pa



Note: Due to continuous technical innovation, R&D and improvement, technical data above mentioned may be of modification accordingly. LUXEN SOLAR have the sole right to make such modification at anytime without further notice.

LUXEN SOLAR ENERGY CO., LTD  
 T: +86 512 6708 1572  
 F: +86 512 6708 1570  
 sales@luxensolar.com  
 www.luxensolar.com

