

LUXPOWER® SERIES 6 650-670W Mono

M12/210mm Cell . 132 Half-Cell Layout



LUXPOWER® Series 6 solar modules stand out with the breakthrough innovation of M12 size (210mm) solar cells for the highest power generation and the lowest LCOE, which makes Series 6 the optimal choice for large solar power plants. The gallium-doped wafer technology empowers significantly the performance against LID and the latest integrated segmented ribbon technology increases the power output and enhances the module reliability for long-term use.



Ideal Choice For Large Scale Ground Installation



High Density Interconnect Technology



Gallium-doped Technology



Anti-PID Low LID Performance

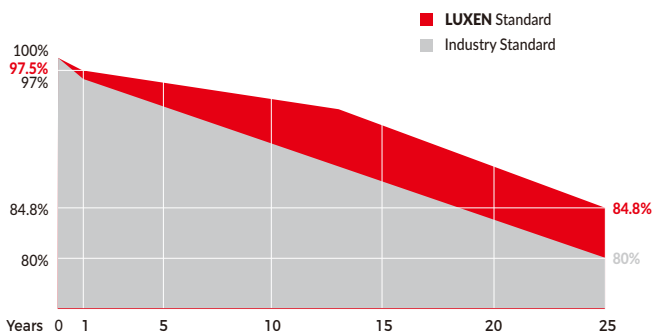


Less Hot Spot Shading Effects



Lower BOS & LCOE

Linear performance Warranty



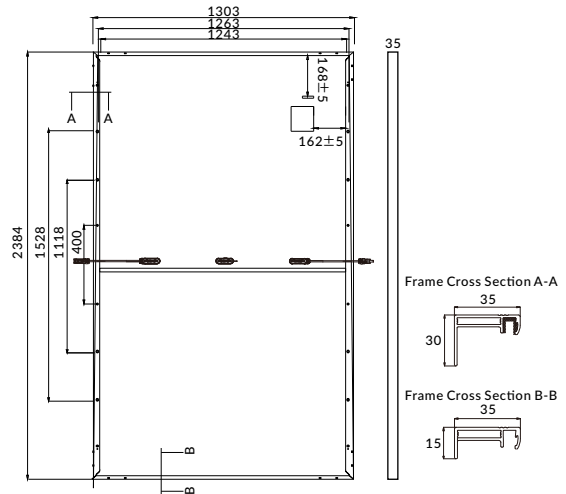
Comprehensive Certificates

- ISO9001:2015 QMS
- ISO14001:2015 EMS
- ISO45001:2018 OHSMS
- IEC61215/IEC61730 Standard quality



MECHANICAL CHARACTERISTICS

Solar Cells	Mono
No. of Cells	132 (6x22)
Dimensions	2384 x 1303 x 35mm
Weight	34.0kgs
Front Glass	3.2mm coated tempered glass
Frame	Anodized aluminium alloy
Junction Box	Ip68 rated (3 by pass diodes)
	4.0mm ²
Output Cables	300mm (+) / 300mm (-)
	Length can be customized
Connectors	Mc4 compatible
Mechanical load test	5400Pa



ELECTRICAL PARAMETERS

POWER CLASS	LNVT-650M		LNVT-655M		LNVT-660M		LNVT-665M		LNVT-670M	
	STC	NOCT	STC	NOCT	STC	NOCT	STC	NOCT	STC	NOCT
Maximum power (Pmax)	650W	491W	655W	495W	660W	499W	665W	503W	670W	507W
Open Circuit Voltage (Voc)	45.58V	42.30V	45.78V	42.48V	45.98V	42.67V	46.18V	42.86V	46.38V	43.04V
Short Circuit Current (Isc)	18.16A	14.89A	18.21A	14.93A	18.26A	14.97A	18.31A	15.01A	18.36A	15.06A
Voltage at Maximum power (Vmpp)	37.61V	34.86V	37.81V	35.05V	38.01V	35.24V	38.21V	35.42V	38.41V	35.61V
Current Maximum Power (Impp)	17.28A	14.09A	17.32A	14.13A	17.36A	14.16A	17.40A	14.19A	17.44A	14.23A
MODULE EFFICIENCY (%)	20.92%		21.09%		21.25%		21.41%		21.57%	

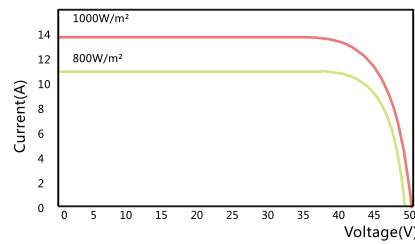
STC: Irradiance 1000W/m², cell temperature 25°C, AM1.5G NOCT: Irradiance 800W/m², ambient temperature 20°C, wind speed 1m/s, AM1.5G

PACKING CONFIGURATION

Container	40'HQ
Pieces per pallet	31
Pallets per container	18
Pieces per container	558

I-V CURVE

LNVT-650M/I-V



OPERATING CHARACTERISTICS

Operating Module Temperature	-40°C to +85°C
Maximum System Voltage	1500 DC (IEC)
Maximum Series Fuse Rating	30A
Power Tolerance	0/+5W

TEMPERATURE CHARACTERISTICS

Nominal Operating Temperature (Noct)	41±3°C
Temperature Coefficient of Pmax	-0.36%/°C
Temperature Coefficient of Voc	-0.28%/°C
Temperature Coefficient of Isc	+0.05%/°C

Note: Due to continuous technical innovation, R&D and improvement, technical data above mentioned may be of modification accordingly. LUXEN SOLAR have the sole right to make such modification at anytime without further notice.